



CHERRY HILL FIRE DEPARTMENT

CAMDEN COUNTY, NEW JERSEY

Effective
01/01/2024 to
12/31/2024

Residential Resale Requirements for One & Two Family Dwellings CSACMAPFEC 5:70-2.3 (a)

Requests must be submitted using the online form located at www.chnj.gov/fire, 3 to 4 weeks prior to the settlement date. Email questions to sdi@chfd.org or call 856-429-7441.

Inspection Fee/Payment

Payment is due at the time of the inspection – credit card, check, or money order payable to Cherry Hill Fire Department; cash **will not** be accepted.

Requests received eight (8) calendar days or more prior to the settlement date:	\$100.00
Requests received seven (7) calendar days prior to the settlement date:	\$115.00
Requests received three (3) calendar days or less prior to the settlement date:	\$162.00
Re-inspection Fee:	\$35.00

Sellers age 62 & over may deduct \$30.00 from the **first** inspection fee - **PROOF OF AGE REQUIRED**

Certificates are valid for 90 days

Inspection Checklist

House Numbers

- Numbers are numerical characters, contrasting color from the house, at least 4" high, permanently affixed to the house & visible from the street. *Light post or mailbox numbers are NOT acceptable.*

Smoke Alarms – UL Approved

- 10-year battery sealed** smoke alarm located on **every level** of dwelling (5:70-4.19) or *hardwired as required
- Basement level **10-year battery sealed** alarm is located at bottom of stairwell, at ceiling level (not between joists)
- Bedroom hallway **10-year battery sealed** alarms **MUST** be within 10 feet of **ALL** bedroom doors
- Smoke alarm located in **every** bedroom on ceilings **10-year battery sealed**
- *Electric smoke alarms (hardwired) **CANNOT** be replaced with battery operated alarms
- Smoke alarms are less than 10 years old and are operational

Any house equipped with a low voltage fire alarm system (installed by an alarm company) must have that system tested and approved by an alarm contractor prior to the CHFD inspection date. A copy of the alarm certification provided by the alarm contractor must be presented to the CHFD inspector at the time of the inspection.

**Electric smoke alarms, required to be installed by the building code, cannot be replaced with battery operated smoke alarms (NJAC 5:70 Section 104.1)*

Do **NOT** install smoke alarms in kitchens, bathrooms, near forced air ducts or furnaces, in the "dead air" space where the ceiling meets the wall, close to ceiling fans, in crawl spaces, or attics.

Carbon Monoxide Alarms – UL Approved

- Located in the hallway, within 10 feet of **ALL** bedrooms
- Installed as per the manufacturer's instructions
- Carbon monoxide alarm(s) are less than 10 years old and are operational

Do **NOT** place alarms in electrical outlets that can be turned off by a switch or that are located against floor molding. Plug-in, battery powered, and hardwired CO alarms are acceptable.

Fire Extinguisher Installation 5:70-4.19 (e)

- Shall be within **10 feet of the kitchen** and located in the path of egress
- Readily accessible and not obstructed from view
- MOUNTED** on bracket
- Must be rated **2A-10B:C**

REVISION January 2022

Diagrams

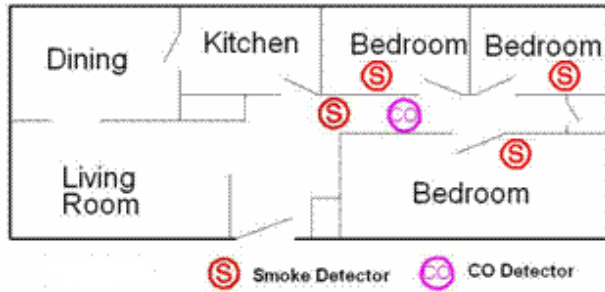


Figure 1

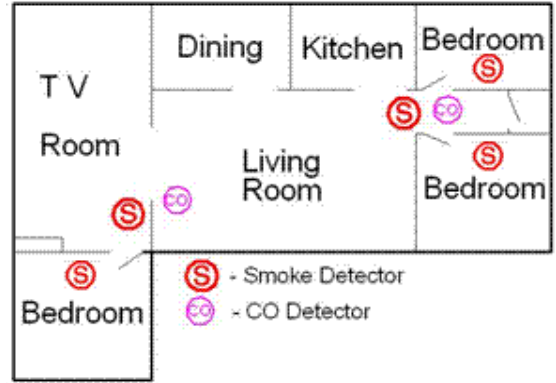


Figure 2

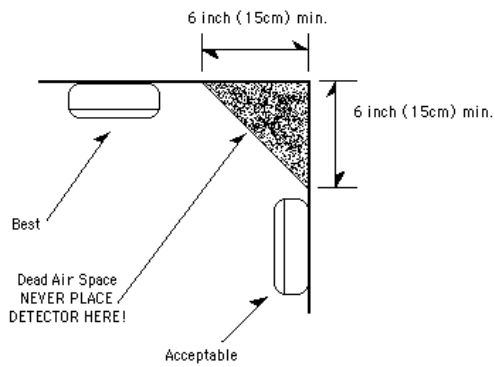


Figure 3

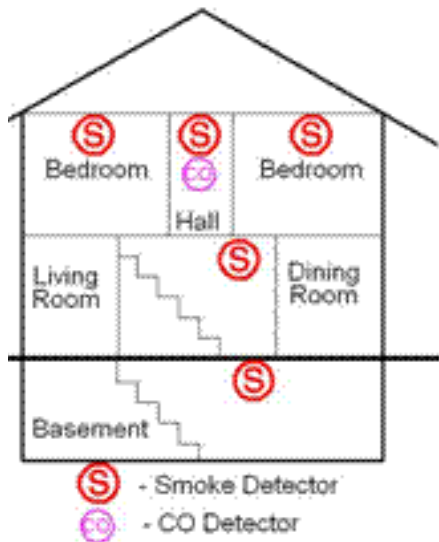


Figure 4

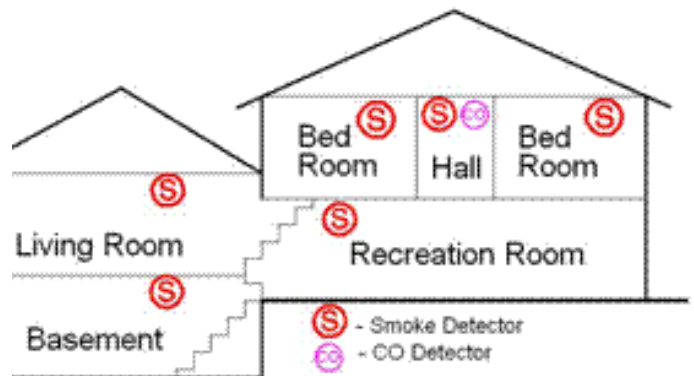


Figure 5